



CFL technics

CFL technics s.a. - Wheel Sets Workshop

CFL technics offers maintenance and repairs of rail freight wagon wheel sets according to VPI04 (IL, IS0, IS1, IS2 and IS3) as well as wagon keepers' guidelines.

Standard services

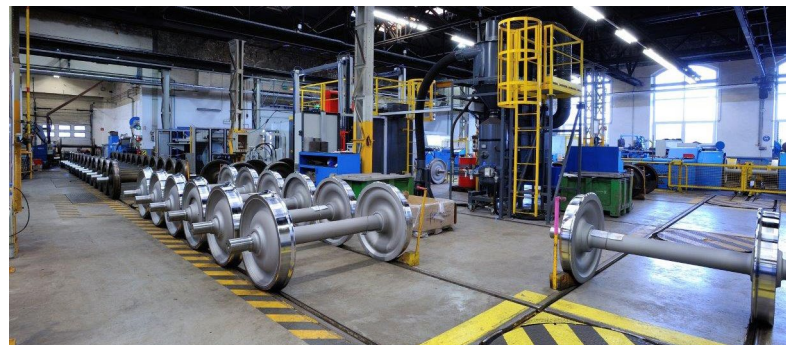
- Dismounting, mounting of wheel set bearings and bearing housing
- Cleaning & evaluation of wheel set bearings
- Inspection/measurement/repair of wheel set bearing housing
- Fully-automated shot blast machine for wheel set cleaning (completely or partial)
- Control of wheel set geometry
- Non-destructive testing of wheel sets by ultrasonic & magnetic particle testing
- Wheel profile machining
- Painting of wheel sets

Equipment

- Hydraulic press for mounting new railway wheels
- Wheel reprofiling lathes
- Turning machine for wheel seats and shafts
- Wheel boring machine with an accuracy of + - 1/100 mm
- Blasting chamber for railway wheels
- Magnetic particle testing cabin (MT)
- Ultrasonic testing system (UT)

Premium added-value services

- Mounting of new wheel discs (IS3)



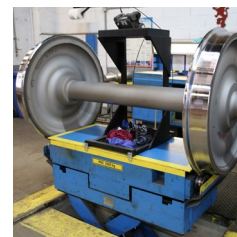
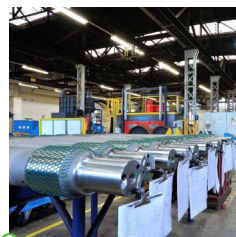
Contact

Khalid HARITI

T. +352 4990 5084

M. + 352 691 928 007

khalid.hariti@cfl-technics.lu



ECOlogistics for our future

CFL technics s.a. | GPS: 50, rue des Ateliers | L-4908 Bascharage | info@cfl-technics.lu | +352 4990 5133
Headquarters: 50, rue des Ateliers | L-4908 Pétange | www.cfl-technics.lu



01 | 2021



CFL technics

CFL technics s.a. - Atelier Essieux

CFL technics effectue des travaux de maintenance des essieux notamment selon VPI04 (IL, IS0, IS1, IS2 et IS3) et/ou spécificité client.

Services standards

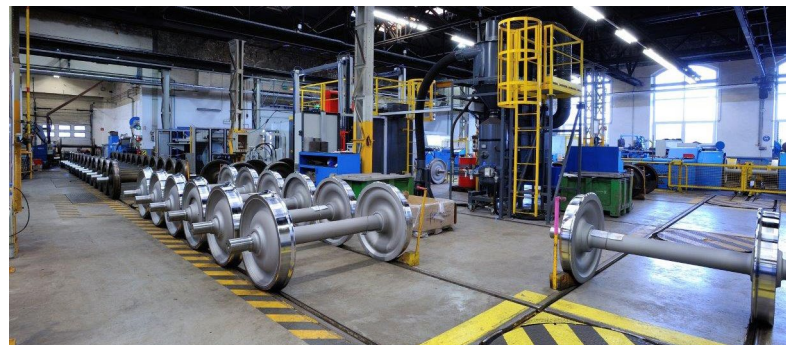
- Démontage, remontage des roulements et des corps de boîtes
- Nettoyage & expertise des roulements
- Inspection des boîtes à roulement avec remplacement plaque/guide manganèse
- Grenailage de l'essieu (entier ou partiel)
- Contrôle géométrique
- Contrôle non-destructif de l'essieu-axe par ultrasons & magnétoscopie
- Reprofilage des corps de roues
- Mise en peinture de l'essieu axe & des corps de roues

Equipements

- Presse hydraulique de calage et décalage pour le montage des corps de roues neufs sur les essieux
- Tour de reprofilage des roues
- Tour d'usinage pour portées de calage et arbres essieux
- Aléseuse pour corps de roues avec une précision de $\pm 1/100$ mm
- Cabine de grenailage essieux
- Cabine de magnétoscopie
- Station d'ultrason

Services à forte valeur ajoutée

- Décalage & calage de corps de roues (IS3)



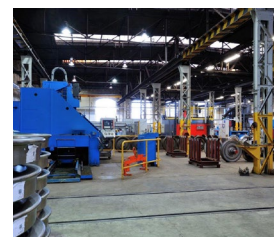
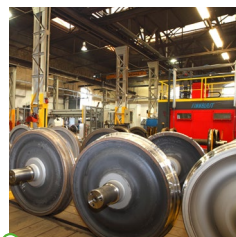
Contact

Khalid HARITI

T. +352 4990 5084

G. + 352 691 928 007

khalid.hariti@cfl-technics.lu



ECOlogistics for our future

CFL technics s.a. | GPS: 50, rue des Ateliers | L-4908 Bascharage | info@cfl-technics.lu | +352 4990 5133
Siège social: 50, rue des Ateliers | L-4908 Pétange | www.cfl-technics.lu



01 | 2021